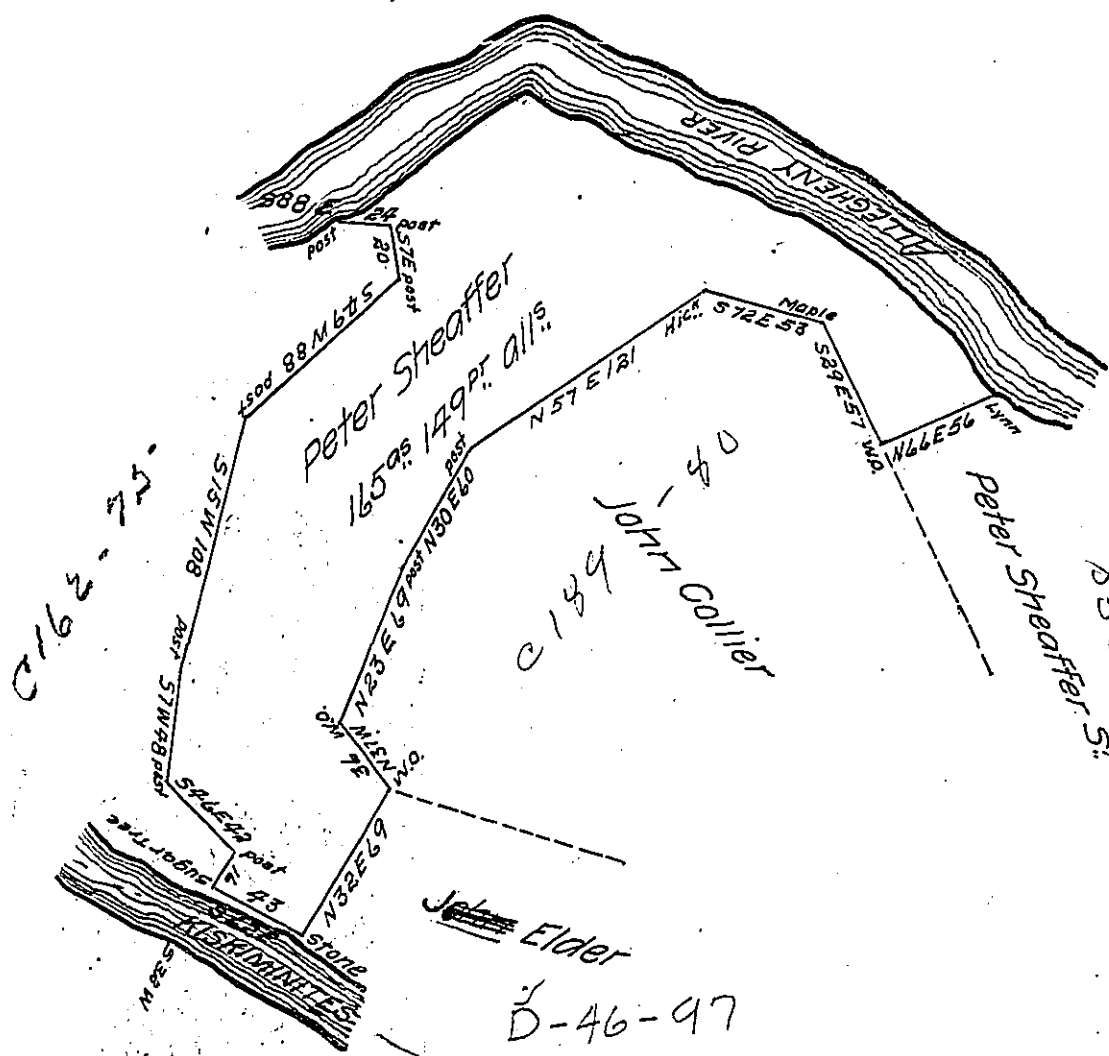


FORM No. 1.

Courses down the river

- N 58 W 8
- N 31 W 30
- N 48 W 37
- N 57 W 26
- N 69 W 42
- N 82 W 112
- 5 6 1/2 W 110.5
- Total 365.5



In pursuance of a warrant granted to Peter Sheaffer dated the 3<sup>rd</sup> Decem<sup>r</sup>. 1827 was surveyed the 12<sup>th</sup> day of May 1835 the above described tract of land containing one hundred and sixty five acres and one hundred and forty nine perches and allowance of six per ct. situate in Allegheny Township Armstrong County on the Allegheny & Kiskiminetus rivers.

To John Taylor Esq. S.G. } Thomas Barr D.S.

IN TESTIMONY that the above is a copy of the original remaining on file in the Department of Internal Affairs of Pennsylvania, made conformably to an Act of Assembly approved the 16th day of February 1833, I have hereunto set my hand and caused the Seal of said Department to be affixed at Harrisburg, this twenty sixth day of February 1907

*Loaie B. Brown*  
 Secretary of Internal Affairs.